

COMBO UNITS

650, 657, 660

Compact and powerful, the Northstar Explorer Series Combo Units are user-friendly versatile on-board information systems.

Explorer Combo units have built-in background maps with high level cartographic detail and the option of employing C-MAP NT MAX™ charting technology. If there are fish to be found, you'll find them with an Explorer Combo unit from Northstar.

EXPLORER COMBO FEATURES:

TRACK-YOUR-BUDDY

When connected with the Explorer 721 VHF, you can automatically plot the position of your DSC radio-equipped boating buddies.

FISH LIKE THE PROS...

High vertical pixel count plus 100X zoom functions mean you can see bottom structure detail like never before. Fish inshore or offshore with the dual frequency sounder and 600 Watts of output power.

FUEL MANAGMENT

Explorer Chartplotter/Fishfinder Combos are the perfect devices for managing important fuel consumption and economy information to help you get the best performance year after year.

C-MAP FOR ALL

All units run C-Map NT MAX™ cartography, with enhanced port details, tidal overlays, location photos and comprehensive chart info.



EXPLORER 657

Northstar's 5" high resolution VGA Chartplotter/Fishfinder combo with Fuel Management and AIS functionality.

The built-in worldwide background map still offers reliable entry-level use, waiting to be enhanced with C-Map's latest cartography: NT MAX™. With a 640 x 480 pixel screen, your display becomes 4 times sharper than the Explorer 650, being a truly impressive, bright and highly functional addition to your boat.

With a range of optional fuel add-ons, the Explorer 657 is a powerful travel tool for your boat.

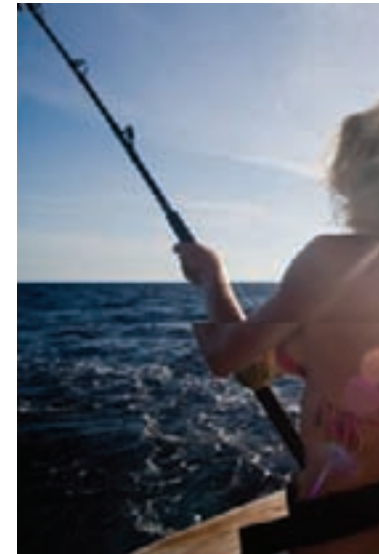


EXPLORER 650

The affordably priced 650 offers the same multifunctional features as the larger Explorer 660 in a 5-inch, 320 x 234 pixel display.

All the great Northstar chart, sounder, SmartCraft™ and fuel options are provided with a fantastic selection of split and full screen options. C-Map's NT MAX™ cartography, including port info, tide flow, perspective views and land data, is fast and clear. The PAGE key provides quick access to 3 preset and 3 favorite displays.

The Explorer 650 has full integration with the Explorer 721's Weather Watch functions: temperature, barometer and fishing conditions are echoed to your Explorer 650 in blazing color.





EXPLORER 660

The vertical format of the Explorer 660 optimizes the boater's forward visibility when navigating, and in sounder mode, takes advantage of the 800 vertical pixels for unbelievable clarity through the water column.



MODEL	PART
EXPLORER 650	
with 124 GPS antenna + 50/200 kHz transom transducer	NS006611
with 124 GPS antenna*	NS006614
EXPLORER 657	
with 124 GPS antenna + 50/200 kHz transom transducer	NS006641
with 124 GPS antenna*	NS006644
EXPLORER 660	
with 124 GPS antenna + 50/200 kHz transom transducer	NS006601
with 124 GPS antenna*	NS006600

* See page 42 for transducer options.

OPTIONS & ACCESSORIES	PART
FOR EXPLORER 660, 650 & 657	
Single engine gasoline fuel kit	AA002277
Twin engine gasoline fuel kit *	AA002275
SmartCraft™ gateway, single engine	NS005020
SmartCraft™ gateway, twin engine	NS005021
Tri-Cable for GPS/AIS/FUEL for 657 and 650	AA002458
Rail mount bracket for Explorer 650 or 657	AA002295
Rail mount clip for GPS antenna	AA002296

COMBO UNIT SUMMARY	650	657	660
Screen size (diagonal)	5" (127 mm)	5" (127 mm)	7" (178 mm)
Daylight viewable color screen (pixels)	320x234	640 x 480	800 x 480
C-MAP NT MAX™ Cartography	✓	✓	✓
Dual Frequency 50 / 200 kHz	✓	✓	✓
600 W RMS (4800 W peak to peak)	✓	✓	✓
Depth Range (with recommended transducer)		✓	✓
Gasoline Fuel computer option *	✓	✓	✓
SmartCraft™ (for Mercury digital engines) *	✓	✓	✓
Track-Your-Buddy (with Explorer 721)	✓	✓	✓
Weather Watch (with Explorer 721)	✓	✓	✓
AIS†	x	✓	x

* Requires optional fuel kit / SmartCraft™ gateway

** Depth capabilities depend on type of transducer used, installation and water clarity. Depth to 3300 ft (1000 m), may be achieved under optimal conditions and using a 1000 W dual element transducer. Refer to transducer section for information on maximizing your transducer performance.

† Requires AIS receiver