

RemoteCommander WR20



In the palm of your hand

Wireless control of your SimNet enabled equipment

The WR20 is unique as it is the only remote available that can control and display data from the full suite of electronics, from chartplotter, radar and echosounder (NavStation) through to autopilot, instruments and for the first time ever, your fixed VHF radio.

This unique, broad range of functionality is tamed using a highly intuitive menu system, that allows you to access what you want, when you want. Its simplicity makes the WR20 an extremely safe option; it's easy to work when you need it most, and you don't have to be physically at the equipment to operate it.

The WR20 is easily integrated into SimNet; simply plug the base station in and immediately all compatible equipment on the network is recognized by the system. The handheld itself is fully waterproof so you can be out on deck even in the worst weather, and the long life battery, which is charged using a simple docking cradle, ensures that the WR20 is always ready for use, meaning you won't get caught without it.

The flexibility of the WR20 is extended through the ability to fully customize the menu operations, making it suitable for a wide range of boats. Whether cruising in your powerboat, taking part in your local sport fishing tournament or braving the oceans single handed, the WR20 adds a whole world of convenience and safety to your time at sea.

Special features:

- Controls the full range of electronics
- The only wireless remote to control your fixed VHF
- Sealed, long life battery keeps costs down
- Rugged docking cradle for trouble free stowing and charging
- Operates up to 100m range – covers all boat size and types
- Key lock to avoid accidental operation
- Connects via Bluetooth to many mobile phones allowing the phone to be kept safe and dry

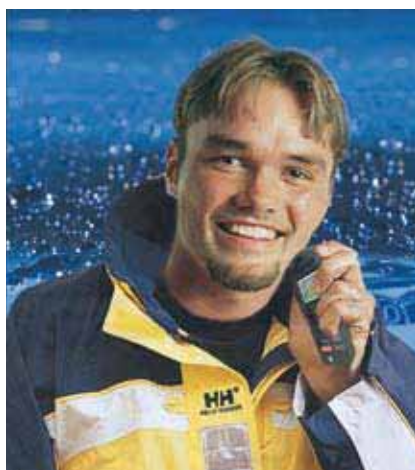


Wireless VHF Handset

If your boat has a SimNet enabled VHF radio, the WR20 will act as a full wireless handset for it. The handheld offers full VHF functionality when linked into your fixed radio, even as far as calling crew on the intercom. Essentially, if the WR20 is connected to your VHF you can save space and money as you simply don't have to invest in a separate handheld radio or intercom.

Man Overboard

The WR20 enhances safety as it gives you access to all of your instruments wherever you are onboard. Two Man Overboard buttons are also included. Should you have to activate the Man Overboard function, your immediate position will be fixed on your Simrad NavStation enabling you to circle around to the exact position and pick up the lost crew member, possibly saving a life in the process.



Full function VHF mobile handset for your Simrad RS80 VHF series. Voice and intercom operation.

WR20 can be used with:
GB40 *)
TP22/32
AP24/28
IS20
VHF RS series

*) Feature available during second half 2008



Drop down list.



A single press of the MENU key gives access to all VHF functions.



Select advanced steering functions from the menu.