

NORTHSTAR 6100i



INTEGRATED NAVIGATION SYSTEM

Northstar's 6100i will change the way you think about and use marine electronics.

Plotter, HD Digital radar, sounder and video are all easy to use.

The 6100i is smart - whether it's a stand alone or networked system. You pick the display size you want, you choose the functions you need. Start simple, it stays simple, no matter how big the boat, how many stations or how many functions you add. It's all about flexibility. The 6100i offers total integration. Hardware. Software. Upgrades. Plug it in and turn it on.

WE CALL IT A NETWORK

N2 Technology is Northstar's method for moving information around your boat. You don't see it, but it's the workhorse inside your unit. Enter a waypoint on one display, and see the waypoint on every display. Insert a Navionics® chart card in the master unit and N2 makes that chart data available to all other units on the boat (as though the card were plugged into each unit). Add a radar to your 6100i, and all units can display and control radar. N2 puts the sounder display in the cockpit.

N2 is what lets you do anything from anywhere.

Combine your Northstar 6100i with the Northstar Weather Module and you can get real-time graphical weather information (see page 11 for more details).

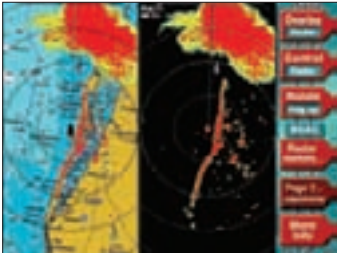
Northstar's 6100i crisp and clear displays are available in five screen sizes to suit your dash. They are the perfect setup for center consoles or sport cruisers.

Pick a single function, or pick them all! Plotter, HD Digital radar, sounder, video, multi-function displays, split screens, and overlays all via one button.

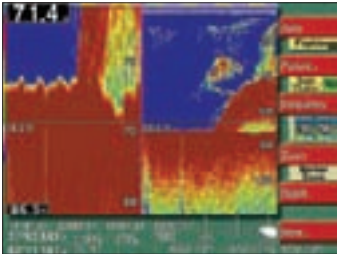
6100i DISPLAY FEATURES

- ❑ Networkable Combo Chartplotter, Sounder, Radar, Video, Satellite Weather
- ❑ Cartography: Navionics® Platinum, Platinum+, Silver, Gold, Gold+
- ❑ Screen: High-Resolution, Direct Sunlight Viewable Screen
- ❑ Fast Network Performance
- ❑ Sonar: Module High Power Dual Frequency (600/1000W, 50/200kHz)
- ❑ HD Digital Radar: Multiple Power & Size Array and Radome Scanners (2kW, 4kW, 6kW, 10kW, 25kW)
- ❑ Video input and outputs
- ❑ SmartCraft™ Engine Monitoring (Diesel and Gas)
- ❑ Waterproof Rugged Casing
- ❑ Available in 6.4", 8.4", 10.4", 12", 15"

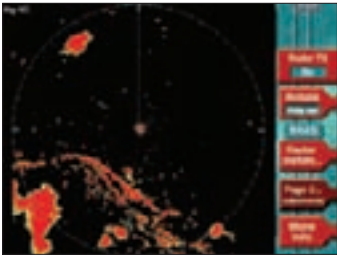




▲ SPLIT SCREEN RADAR/CHART OVERLAY



▲ SPLIT ZOOM SOUNDER DISPLAY



▲ RADAR



▲ NTSC / PAL VIDEO OVERLAY

PLOTTER

The Northstar 6100i chartplotter is the core of the integrated navigation system. Concise, crystal-clear Navionics® Platinum cartography presented on full-color displays with blindingly fast speed, with award winning Platinum cartography available on the 6100i, all at the touch of a single key.

Each size comes standard with GPS and WAAS. Touch-of-a-key simple and vintage Northstar.

Optional cartography required.

SOUNDER

Northstar's 6100i sounder makes fishing easy.

Razor-sharp screen clarity gives you all the information you need. Mark a fish? The unique SoundTrac™ feature, lets you scroll back in "history" and navigate back to the exact spot with the touch of a button. Standard features include:

Dual-frequency (50/200 kHz). Four zoom modes: bottom, bottom lock, bottom lock center, and marker zoom. Nine different screen color sets.

Adjustable fish, bottom, and temperature alarms. Depth in feet, fathoms, or meters, speed through-the-water and water temperature are available.

When you combine the Northstar 491 Sounder with the 6100i navigation and radar functions, the performance is just plain awesome. Unless you're a fish.

NAVIONICS® CARTOGRAPHY

XL, XL3 and XL9 Size Coverage for both Fresh and Saltwater Great detail: 3D View, Satellite Photo Overlay, Panoramic Pictures, Port Services & Points-of-Interest, Tides & Currents, Coast Pilot Books Easy to use: Plug-and-play cartridge is ready to use, no CDs, downloads or unlock codes required.

Concise, crystal-clear Navionics® cartography presented on full-color displays with blindingly fast speed, with award winning Platinum cartography available on the 6100i.

HIGH DEFINITION DIGITAL RADAR

Radar was designed to be part of the 6100i integrated navigation system.

You don't "learn" this radar. You use it. Night or day, the clarity of information verges on inspirational. Use the image in chart-overlay or split-screen mode and even the most daunting passages become a snap. RangeRider™, a Northstar exclusive, automatically saves your tuning adjustments for each range. When you go back to a range, the settings you've made are already there.

Radar data can be presented in North Up, Course up, Leg Up and Heading up and of course you can overlay the radar on the charts.

Add a radar when you're ready. You choose the power and the antenna you want. It's a very sophisticated radar, yet a very flexible part of the 6100i system.

VIDEO - IT'S EVERYWHERE

The 6100i integrated system has NTSC and PAL video input and VGA output. Perfect for docking/engine monitoring/underwater cameras, DVD and TV. Just press the video key. It's full of remote possibilities. Football next to the sounder display in the cockpit. Radar displayed on the TV*, or any external monitor/display. Giving you sizeable video from any source on the boat.

COMPLETE SYSTEM WITH STANDARD WAAS GPS ANTENNA (AN150-P) & 50'/15 METER CABLE	PART
6.4" 6100i Network System	NS006051
8.4" 6100i Network System	NS006061
10.4" 6100i Network System	NS006071
12" 6100i Network System	NS006081
15" 6100i Network System	NS006091
6100i Remote Control	6KRMC-A
6100i Ethernet Switchbox*	SWITCHBOX-IK
6100i High gain antenna	AN156-P

Note: * Network cables sold separately

AVAILABLE IN:



491 SOUNDER MODULE FOR 6100i

*Northstar's 491 Sounder.
All the information you need, all the time.*

This unit offers you the same easy to use functionality and screen clarity for under-the-water information that you would expect from Northstar's unmatched chartplotter, GPS and radar. The 491 is loaded with enhanced target discrimination results. This gives you precise distinction between bait fish and larger fish.

Northstar's SoundTrac™ gives you the ability to go to a target and rename the place to save it permanently in the fish's history and easily navigate to it. The Northstar 491 is feature rich: 50/200kHz, 600/1000W, Bottom Lock, A Scope, White Line, Alarms for depth, fish, and temperature. Northstar matched transducers. Each feature can be tuned to fit your needs. Or, simply leave the 491 in auto mode and start fishing.



PART	NS000491
491 Sounder Module complete (includes kit)	

THE SERIOUS ANGLER'S SOUNDER

Simply press the 6100i "clear" key (CLR) to hide all menus and increase the information display area on screen.

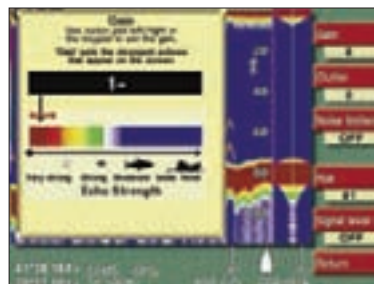
There are four zoom modes, bottom zoom, bottom lock, bottom lock center and marker zoom. "Bottom zoom" zooms in on the sea-bed. "Bottom Lock Zoom" flattens out the bottom and shows echoes just above it. Bottom Lock Center does the same as Bottom Lock, but the sea-bed is in the middle of the zoom display (allowing you to see below the sea-bed). Marker zoom allows you to move the marker on the normal view mode, and the zoom display follows the

depth of the marker. You also can select the zoom level (as with all zoom modes).

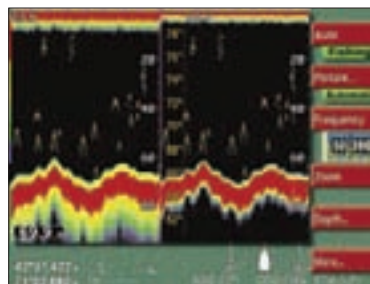
Dual Frequency: Display 50 kHz or 200 kHz individually in full screen mode or together on the split screen.

Basic navigation data is displayed at the bottom of each screen. The alarm screen allows you to set custom fish, temperature and depth alarms to help you find specific fish.

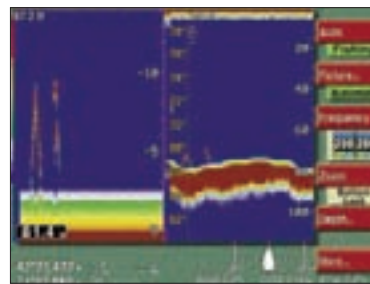
Northstar's graphic user interface makes changing sounder settings quick and easy.



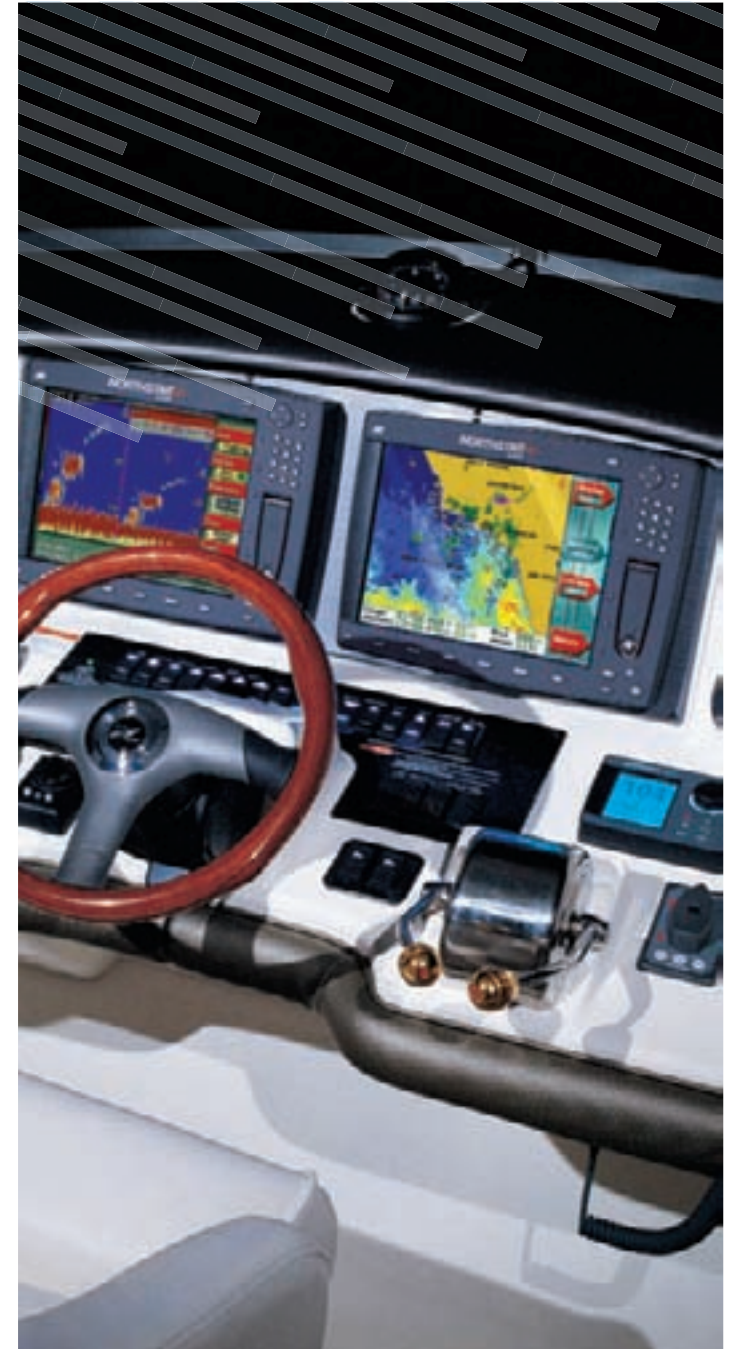
▲ ADJUSTING THE GAIN ON YOUR 6100i



▲ DUAL FREQUENCY (0 SIGNAL LEVEL)



▲ BOTTOM LOCK ZOOM (SEABED IN ZOOM MODE)



NORTHSTAR WEATHER MODULE FOR 6100i

491 SOUNDER MODULE
NORTHSTAR SATELLITE WEATHER

Northstar Weather Module:

Northstar has teamed with Sirius Marine Weather to deliver real-time, graphical weather information directly to your 6100i chart screen.

The Northstar Weather Module Includes:

- ❑ Receiver, antenna and cabling.
- ❑ SIRIUS Marine Weather available anywhere within SIRIUS's satellite footprint, which blankets the 48 contiguous states, and international waters extending hundreds of miles into the Atlantic and Pacific Oceans, the Gulf of Mexico and Caribbean Sea.
- ❑ Weather Features Displayed:
 - Weather Radar
 - Sea Surface Temperature
 - Marine Zone Forecasts
 - Marine Warnings
 - Surface Observations
 - Forecast Wave Height
 - Forecast Winds
 - Animated displays



▲ WEATHER MODULE AND ANTENNA

	PART
Weather module	NS004746R

Note: Weather module only available in the U.S.A

THE NORTHSTAR SATELLITE WEATHER SYSTEM: MAIN CHART GUIDE



- 1 Sea Surface Temperature** You can set high and low values to clearly identify water temperatures.
- 2 Precipitation** Rain and snowfall info.
- 3 Spot Weather** Cursor position reveals spot sea temperature and weather conditions, depending on the overlay choice. Hovering over a surface buoy reveals detailed views (Surface Observations).
- 4 Wind/Wave Info** Wave height and wind speed is indicated by color.
- 5 Animation** To help you analyze weather patterns and sea surface temperature data over a user-defined period is played back.
- 6 Wind Barbs** Indicating direction and speed, these help you identify cyclonic centers and flow patterns.
- 7 Lightning Indicators / Storm track**

